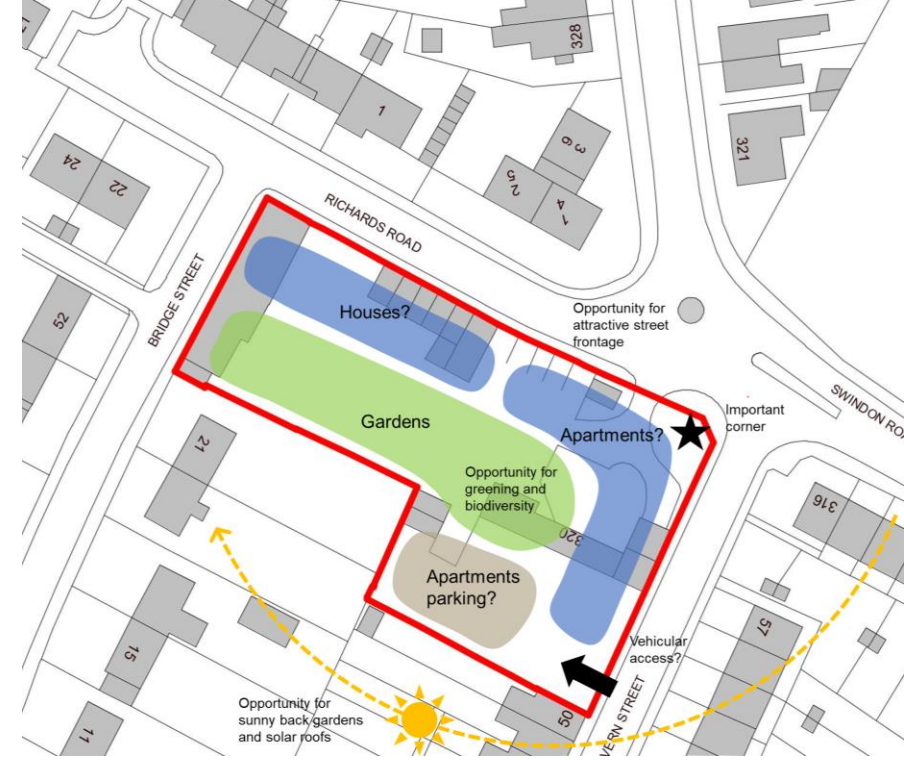


Developing the proposed character of the 320 Swindon Road site

We'd like to get your thoughts on how the proposed development should look and feel. We look forward to hearing if you have any views on the below.



ARCHITECTURE

How can the homes create a beautiful, uplifting place to live? Have you seen any good examples recently?



LANDSCAPE

How can the development incorporate green space or opportunities for growing?



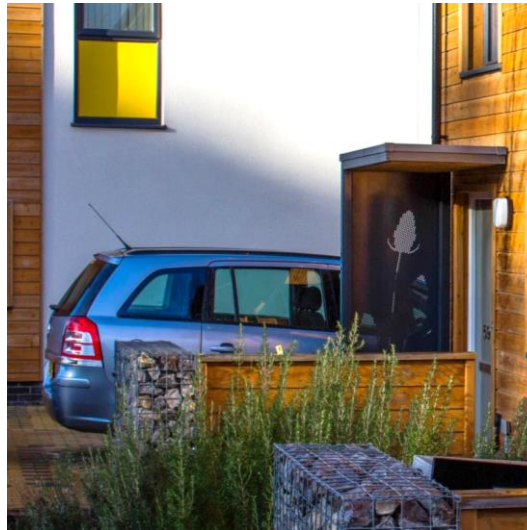
SUSTAINABILITY

What sustainability issues should the development be seeking to address and how?



BIODIVERSITY

How can the development include opportunities for wildlife and ecology?



PARKING & BIN STORAGE

How can these be successfully integrated into the proposals?



ANYTHING ELSE?

What other areas should we be concentrating on to create a high quality development?